

LSI GS 550



Wireless Indicating System



The GS550 Display/Receiver provides a wireless solution to improve the safety and efficiency of mobile crane operations. The GS550 Display offers a fullyflexible design, with the versatilityto monitor a combination of many different types of sensors. It can operate as a basic Wind Speed,A2B or Boom Angle Sensormonitor, or can be utilized as a ful rated capacity limiter, monitoring the crane load charts and providing the crane operator with the critical information needed for his operations.



The Trimble GS550 Indicating System features:

- Monitors up to 32 Sensors
- Text Display of critical data
- Actual Load and Allowable Load
- Radius of the Load
- Crane Configuration
- List and Trim Angle
- Excellent visibility day or night
- Reception Range 4,300ft, 1300m
- Data Logging with USB download

GS550 System Features

- Direct Sequence Spread Spectrum 2-way Communications
- User Settable Limits and Alarms
- Operators can set up to 99 parts of line
- USB Port for upload and download of data
- Data Logging of up to 15,000 events
- Listening Mode option for remote sensors monitoring
- Relay output for external function lockout
- Temperature Range -20 deg c to + 70 c



Specifications are subject to change without notice.

About us

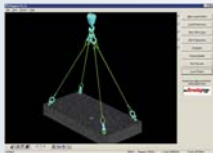
SkyAzúl is an industry leader in the sales and service of information and control systems for construction equipment. Skyazúl specializes in providing system design, logistics and project management for a comprehensive equipment solution.

Other Products Available From SkyAzúl



HoistCam

Wireless camera system eliminates the blind spots for Operators and Managers



Rigging Pro

Software to create professional and accurate rigging plans



PRS 90 Wireless Indicator

Wireless Indicating System for Mobile Cranes

Sigalarm Wireless System



Protects equipment and personnel from high voltage lines

HIRSCHMANN

