

LSI GS375 Wireless A2B System



A FAIL-SAFE AND FLEXIBLE SOLUTION DESIGNED TO WARN THE OPERATOR OF TWO-BLOCK INCIDENTS

The GS375 A2B Display and the GS075-B Wireless A2B Switch offers users a very effective and proven solution for monitoring stand alone A2B. The GS375 A2B Display comes equipped with audible and visual alarms, both of which will activate if a two-block event occurs.



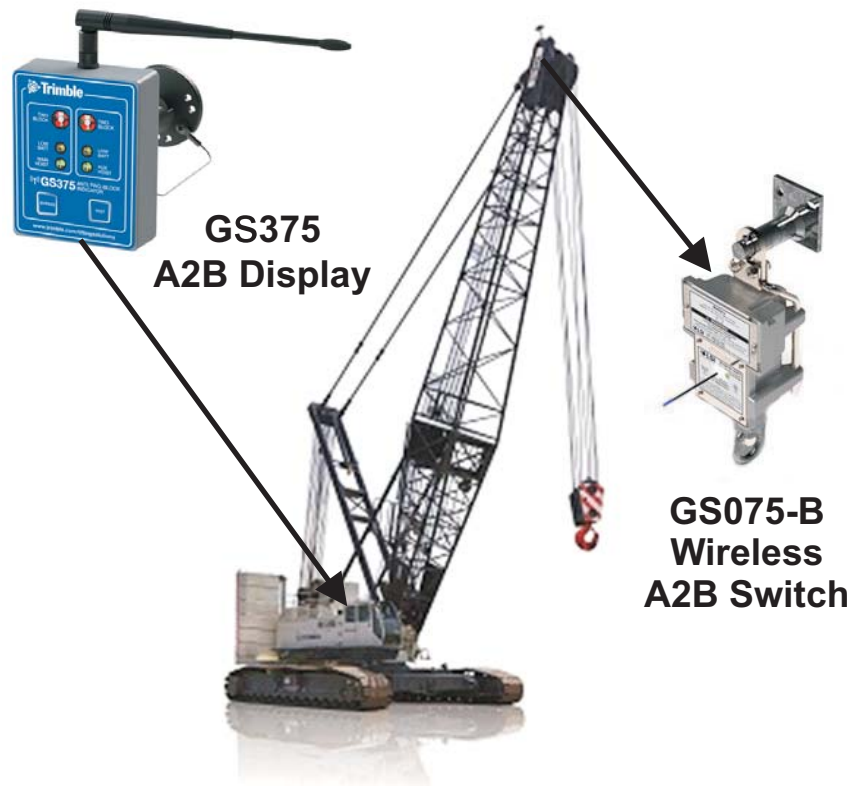
Features Include:

- Average 4 years of battery life
- Transmission range of 4,000 feet
- Compact and waterproof A2B Display
- A2B Switch will go to sleep 5 minutes after the display is turned off
- The GS375 Display can also provide a lockout signal to optionally installed, lockout solenoid valves

GS375 Wireless A2B System

- The display provides users with the ability to monitor up to two A2B switches simultaneously
- If for any reason communication is lost between the switch and the display, an audible/ visual alarm will immediately sound, warning the operator of communication loss
- The GS075-B A2B Switch utilizes a Direct Sequence-Spread Spectrum radio chip, featuring two-way communication
- Users can also utilize a "D" cell alkaline battery if a lithium battery is not available

Specifications are subject to change without notice.



About us

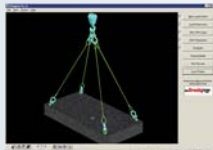
SkyAzúl is an industry leader in the sales and service of information and control systems for construction equipment. Skyazúl specializes in providing system design, logistics and project management for a comprehensive equipment solution.

Other Products Available From SkyAzúl



HoistCam

Wireless camera system eliminates the blind spots for Operators and Managers



Rigging Pro

Software to create professional and accurate rigging plans



PRS 90 Wireless Indicator

Wireless Indicating System for Mobile Cranes

Sigalarm Wireless System



Protects equipment and personnel from high voltage lines

HIRSCHMANN

