

LSI GS 820



Wireless Indicating System



The GS820 Display/Receiver provides a wireless solution to improve the safety and efficiency of mobile crane operations. The GS820 Graphical Display combines the ability to monitor a wide range of sensors with the capability of adding load charts to the system. It features a built in data logger for logging critical information and the versatility to monitor a combination of different types of sensors.



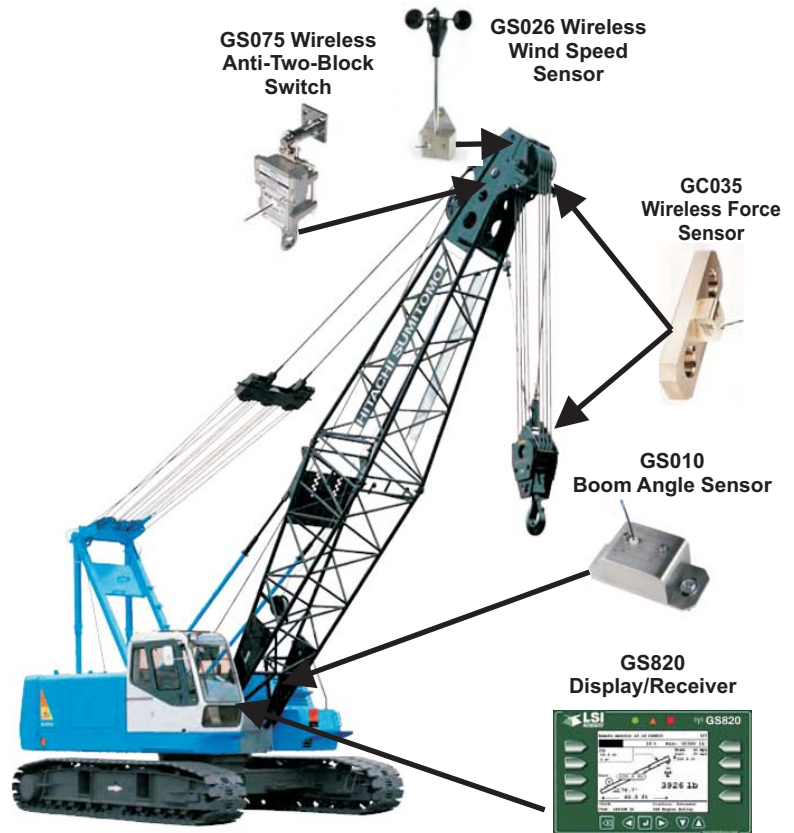
The Trimble GS820 Rated Capacity Limiter features:

- Monitors up to 32 Sensors
- Graphical Display of critical data
- Actual Load and Allowable Load
- Radius of the Load
- Crane Configuration
- 6in Grayscale transflexive LCD w/excellent visibility day or night
- Reception Range 4,300ft, 1300m
- Data Logging with USB download

GS820 System Features

- Direct Sequence Spread Spectrum 2-way Communications
- User Settable Limits and Alarms
- Simultaneously display up to 20 data fields
- USB Port for upload and download of data
- Data Logging of up to 32,000 events
- Listening Mode option for remote sensors monitoring
- Relay output for external function lockout
- Temperature Range -20 deg c to +70 c

Specifications are subject to change without notice.



About us

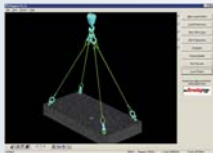
SkyAzúl is an industry leader in the sales and service of information and control systems for construction equipment. Skyazúl specializes in providing system design, logistics and project management for a comprehensive equipment solution.

Other Products Available From SkyAzúl



HoistCam

Wireless camera system eliminates the blind spots for Operators and Managers



Rigging Pro

Software to create professional and accurate rigging plans



PRS 90 Wireless Indicator

Wireless Indicating System for Mobile Cranes

Sigalarm Wireless System



Protects equipment and personnel from high voltage lines

HIRSCHMANN

